

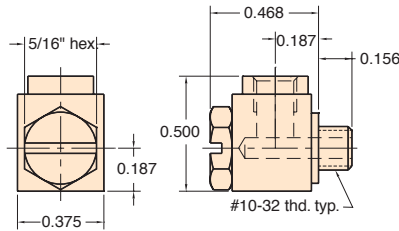


MINIMATIC® L T X FITTINGS

Adjustable "L" Fitting



Part No. Description
15002-1 "L" Fitting



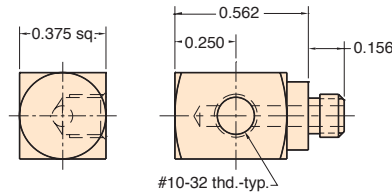
Material: Brass body, stainless steel stud
Stud: Stainless steel hex head with screwdriver slot (12292)
Thread: #10-32
Seals: Buna-N o-ring furnished
Use: Permits port to be aimed 360° in one plane, then secured by tightening screw. Also useful in connecting and disconnecting hose in hard-to-reach locations.
Options: (-ENP)



"L" Fitting



Part No. Description
15002-2 "L" Fitting



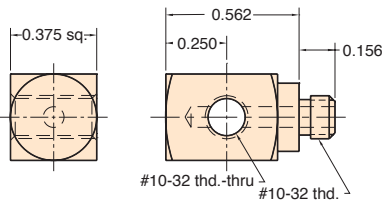
Material: Brass
Thread: #10-32
Gasket: Buna-N furnished in package only
Use: Allows ports to be brought out 90° to the side. For exact positioning use thread sealant
Options: (-ENP)



"T" Fitting



Part No. Description
15002-3 "T" Fitting



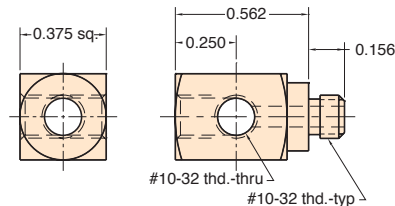
Material: Brass
Thread: #10-32
Gasket: Buna-N furnished in package only
Use: Like the "L" fitting, except ports out both sides. For precise positioning use thread sealant
Options: (-ENP)



"X" Fitting



Part No. Description
15002-4 "X" Fitting



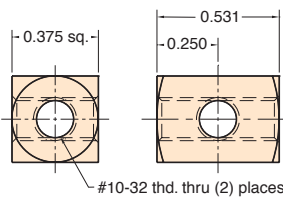
Material: Brass
Thread: #10-32
Gasket: Buna-N furnished in package only
Use: May be used as a miniature manifold, or "L" or "T" fitting by plugging unused ports with screw plug 11755. For precise positioning use thread sealant
Options: (-ENP)



"X" Coupling



Part No. Description
15002-5 "X" Coupling



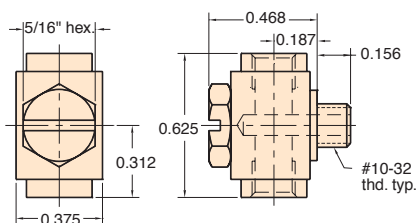
Material: Brass
Thread: #10-32
Use: Ideal as small manifold.
Options: (-ENP)



Adjustable "T" Fitting



Part No. Description
15002-6 "T" Fitting



Material: Brass
Thread: #10-32
Stud: Stainless steel hex head with screwdriver slot (12292)
Seals: Buna-N o-ring furnished
Use: Permits ports to be aimed in any direction 360° in one plane then secured by tightening screw. Also useful for connecting or disconnecting hose in tight spots.
Note: Same dimensions as 15002-1 "L" fitting, except length, which is 5/8"
Options: (-ENP)

