

REV	ECO	DATE	COMMENTS
			DRAFT

REMOVE ALL BURRS  
BREAK ALL SHARP EDGES  
EXCEPT WHERE SPECIFIED

ALL DIAMETERS TO BE CONCENTRIC WITHIN  
.005 T.I.R. UNLESS OTHERWISE SPECIFIED

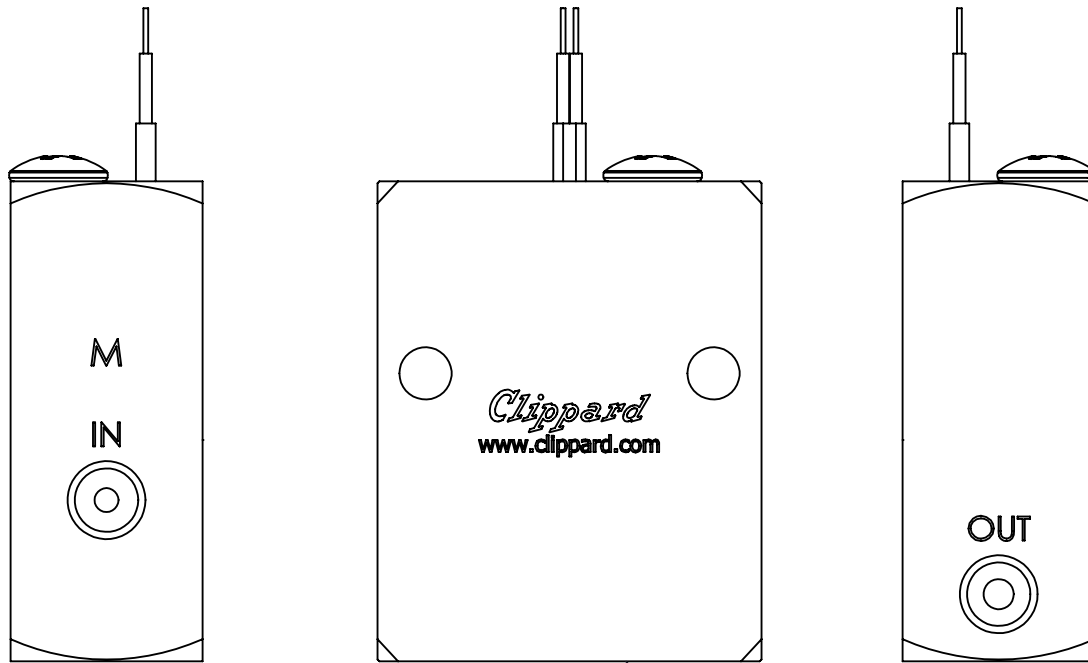
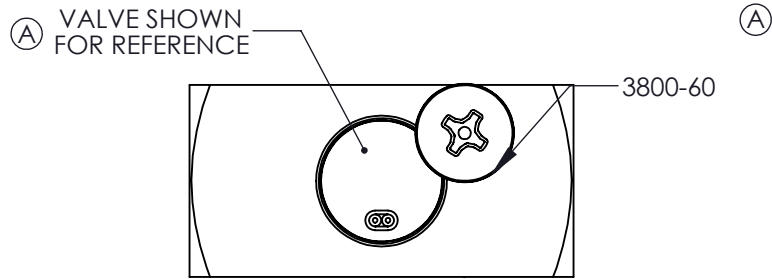
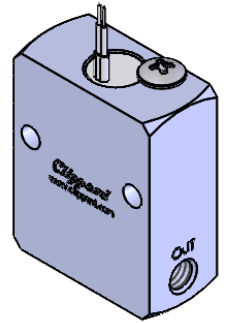
This drawing is the property of CLIPPARD INSTRUMENT LABORATORY, INC. who claims proprietary rights to all information disclosed.

MATL. ~		UNLESS SPECIFIED		<b>CLIPPARD INSTRUMENT LAB., INC.</b> www.clippard.com	
FINISH ~		DIMENSIONS ARE IN INCHES			
DR. BY	GMB	DATE	10-09-24	PART NAME	
CK. BY		ENGR.	GMB	8mm PROPORTIONAL VALVE	
				2 WAY N.C.	
		SCALE	2:1	SHEET	1 OF 1
				DWG. NO.	30116

TOLERANCES:  
.XX = ± .010  
.XXX = ± .005  
ANGLE = ± 1°  
SURFACE FINISH = 64 ✓

DWG. NO.

30118



MANIFOLD-SEE TABLE

MODEL NUMBER	MANIFOLD
SPM-01	30117
SPM-01-SS	30117-1
M-SPM-01	M-30117
M-SPM-01-SS	M-30117-1

REV	ECO	DATE	COMMENTS
A		10-08-24	REVISED
		10-11-24	RELEASED

MATL.	~		
FINISH	~		
DR. BY	GMB	DATE	07-11-23
CK. BY	GJH	ENGR.	GMB

UNLESS SPECIFIED  
DIMENSIONS ARE IN  
INCHES

TOLERANCES:  
 .XX = ± .010  
 .XXX = ± .005  
 ANGLE = ± 1°  
 SURFACE FINISH = 64

**Clippard** CLIPPARD INSTRUMENT LAB., INC.  
www.clippard.com

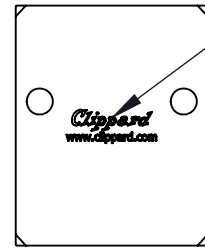
PART NAME: SINGLE STATION MANIFOLD ASSEMBLY  
8mm PROPORTIONAL VALVE

SCALE: 2:1 SHEET 1 OF 1 DWG. NO. 30118

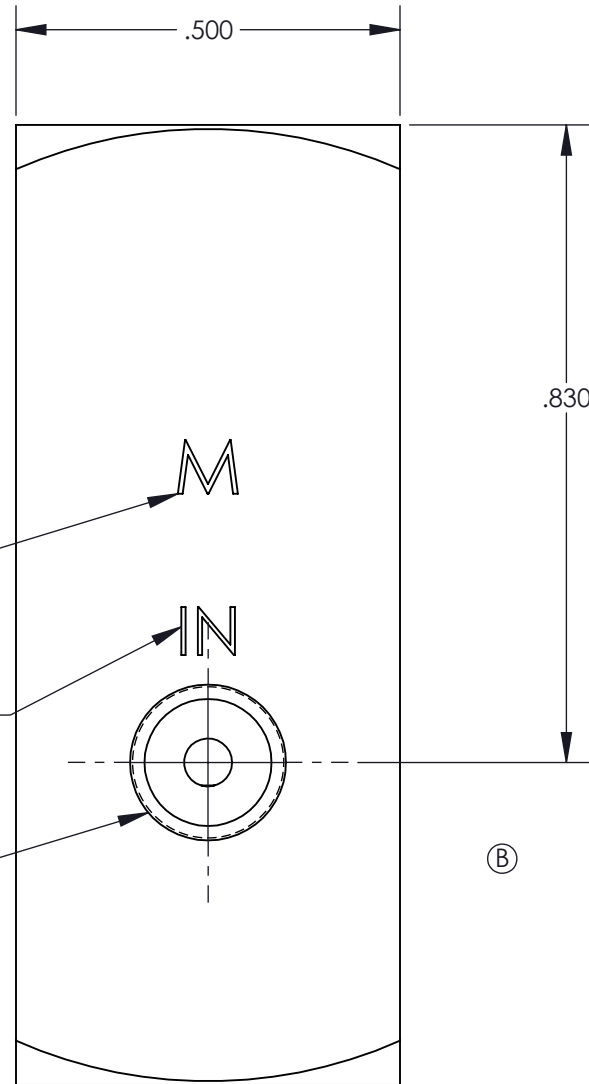
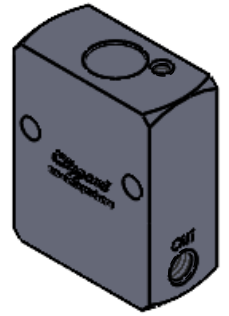
DWG. NO. 30117

ALL DIAMETERS TO BE CONCENTRIC WITHIN .005 T.I.R. UNLESS OTHERWISE SPECIFIED

REMOVE ALL BURRS  
BREAK ALL SHARP EDGES  
EXCEPT WHERE SPECIFIED



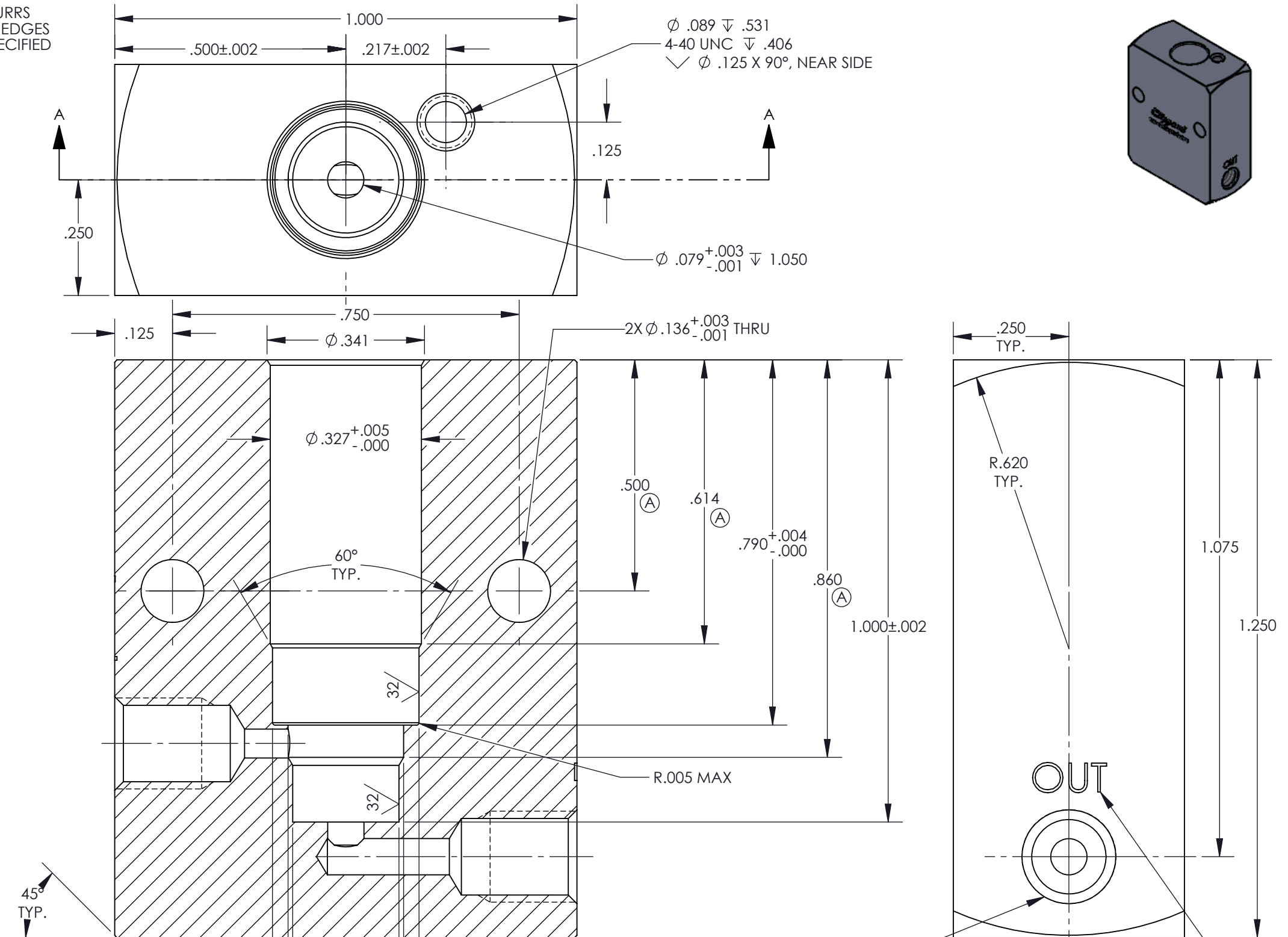
LASER MARK WITH  
CLIPPARD LOGO  
AND WEBSITE AS SHOWN



MARK "M" ON  
M-30117 ONLY

MARK "IN" AS SHOWN

INLET, SEE TABLE



OUTLET, SEE TABLE

MARK "OUT" AS SHOWN

REV	ECO	DATE	COMMENTS	PART #	INLET	OUTLET	MATERIAL	FINISH
B		10-08-24	REVISED	30117	Ø.062 <sup>+0.003</sup> <sub>-.001</sub> .540 Ø.161 <sup>+0.003</sup> <sub>-.001</sub> .250	Ø.079 <sup>+0.003</sup> <sub>-.001</sub> .540 Ø.161 <sup>+0.003</sup> <sub>-.001</sub> .250	ALUMINUM	BLACK ANO
		10-11-24	RELEASED	30117-1	10-32 UNF-2A .188 ∇ Ø.203 X 90°	10-32 UNF-2A .188 ∇ Ø.203 X 90°	303 S.S.	~
				M-30117	Ø.062 <sup>+0.003</sup> <sub>-.001</sub> .540 Ø.166 <sup>+0.003</sup> <sub>-.001</sub> .250	Ø.079 <sup>+0.003</sup> <sub>-.001</sub> .540 Ø.166 <sup>+0.003</sup> <sub>-.001</sub> .250	ALUMINUM	BLACK ANO
				M-30117-1	M5X0.8-6H .188 ∇ Ø.203 X 90°	M5X0.8-6H .188 ∇ Ø.203 X 90°	303 S.S.	~

This drawing is the property of CLIPPARD INSTRUMENT LABORATORY, INC. who claims proprietary rights to all information disclosed.

MATERIAL: SEE TABLE		UNLESS SPECIFIED DIMENSIONS ARE IN INCHES TOLERANCES: .XX = ± .010 .XXX = ± .005 ANGLE = ± 1° SURFACE FINISH = 64
FINISH: SEE TABLE		
DR. BY: GMB	DATE: 07-11-23	
CK. BY: GJH	ENGR. GMB	

<b>CLIPPARD INSTRUMENT LAB., INC.</b> www.clippard.com		
PART NAME: <b>SINGLE STATION MANIFOLD</b> 8mm PROPORTIONAL VALVE		
SCALE: 4:1	SHEET 1 OF 1	DWG. NO. 30117